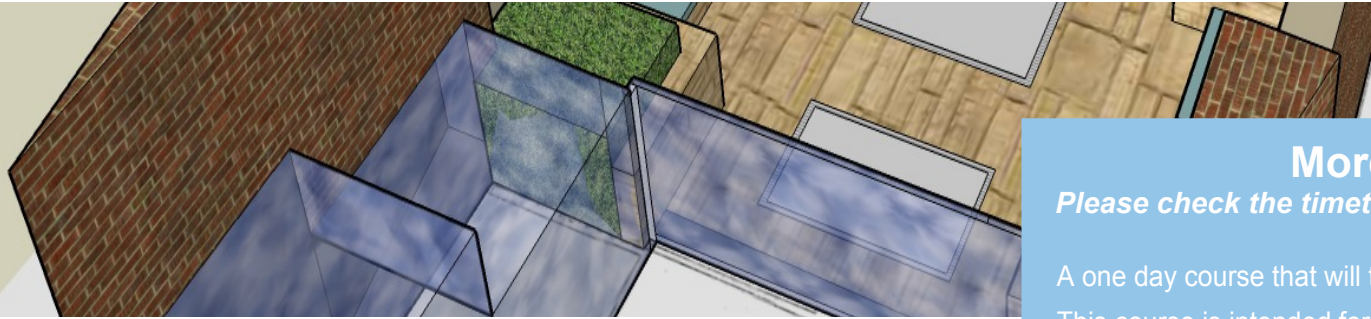


One Day Advanced SketchUp Course

Taking your SketchUp modelling to the next level



Course details

This is a fun and relaxed day course that will get you up to the next level of using SketchUp

A great follow-on from our Introduction to SketchUp Day Course.

Discover the more advanced capabilities for the garden designer under the guidance of your tutor

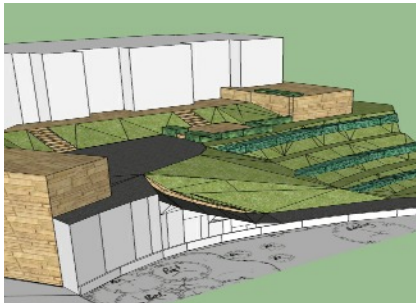
Topics covered

- Levels
- Sandbox
- Section
- Geographic location
- Light and shadows
- 3D Warehouse
- Animation/Styles

What else

Your day with us includes a delicious lunch and starts with welcome tea & coffee

There are informative handouts to take away to help with practice at home



More about this course

Please check the timetable for the tutor of your chosen course date

A one day course that will take your CAD skills to the next level.

This course is intended for those with some previous experience of SketchUp and is specifically aimed at use in garden design.

The perfect follow-on course after attending our SketchUp for Beginners course.

Clients often find it challenging to picture the finished garden when looking at a master layout plan. Anything that we can do to help them will help us to sell our design ideas.

Being able to see and think in 3D is also helpful for the designer and the process itself. You can use the system to create perspective views of the garden, 'walk throughs' of the site and even sections through the computer generated model of your garden.

Please note that you will be required to bring your own laptop in order to undertake the tutored exercises and monitored tasks.

Please come with SketchUp Make already downloaded - more details can be found at: SketchUp Make on the internet.

Exercises include

- Sandbox
- Materials Palette
- Text preferences
- Using components
- Geo location
- Animation
- Creating sections
- Styles

Tea, coffee and a delicious lunch are included and all levels of previous experience welcome. Come and get to know like-minded people and escape from your busy schedule to our lovely rural location.

Courses will only run with a minimum of four students.